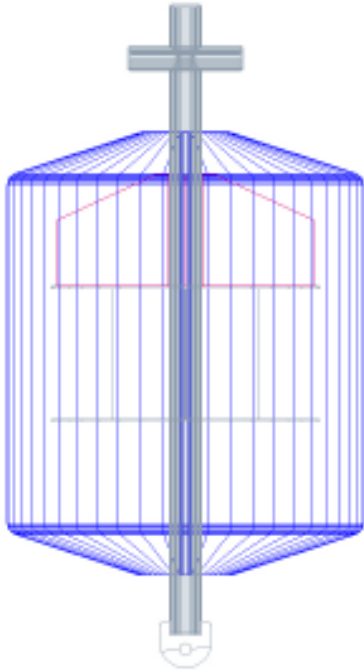


## PCMB SERIES MOORING BUOYS



PCMB series buoys are designed for mooring of a wide range of vessels in offshore conditions. They are also used as drawback buoys (backdown buoys) to hold workboats off of oil platforms. The coned top minimizes seagull roosting area while the peg bottom helps reduce shock loading on the mooring and airborne spray in heavy seas.

PCMB series buoys are made of closed cell, crosslinked polyethylene foam covered with a tough Spectra® 900 high strength fabric reinforced Seathane® polyurethane skin. We do not offer this series in an economy version because of the harsh conditions that this type of buoy must endure.

These buoys have internal aluminum radar reflectors embedded in the floatation foam.

Steel components of these buoys are hot dipped galvanized carbon steel. Aluminum metalized carbon steel and stainless steel metal components are optional.

PCMB series buoys are not internally ballasted. They depend on the weight of the mooring to maintain a proper attitude. An underwater weight of 15% to 45% of the buoy's net buoyancy should be provided by the mooring.

Model No.	Diameter	St. Side Height	Through Pipe Size	Weight	Net Buoyancy
PCMB-2	24"	20"	3" Sch.40	74 lbs.	313 lbs.
PCMB-3	36"	30"	3" Sch. 80	183 lbs.	1,128 lbs.
PCMB-4	48"	40"	4" Sch. 40	360 lbs.	2,708 lbs.
PCMB-5	60"	50"	4" Sch. 80	650 lbs.	5,423 lbs.
PCMB-6	72"	60"	6" Sch. 40	1,387 lbs.	9,080 lbs.
PCMB-7	84"	78"	6" Sch. 80	2,233 lbs.	17,719 lbs.
PCMB-7.5	90"	87"	8" Sch. 40	3,122 lbs.	19,564 lbs.
PCMB-8	96"	96"	8" Sch. 80	4,390 lbs.	23,915 lbs.

These buoys are not intended for use in areas where ice may crust in excess of 4".

*Seathane® is a trademark of Urethane Technologies, Inc.  
Spectra® is a trademark of Allied-Signal Corp.*

