

RMX-L SERIES LIGHTED SPAR MARKER BUOYS

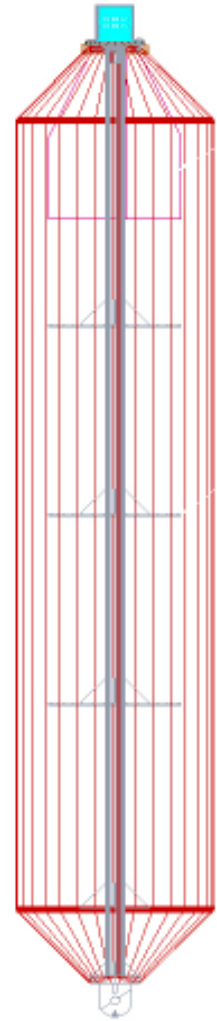
RMX-L lighted series buoys are designed as lighted spar marker buoys for marking the location of wrecks, underwater obstructions and/or artificial fishing reefs. These buoys are normally yellow in color with an amber light. They are also used as well head or subsea completion marker buoys in a red and white horizontal stripe design. This series uses an internal aluminum radar reflector. Also see the RMX - L series reef marker which is the unlighted version of this buoy.

RMX-L lighted series buoys are made of closed cell, crosslinked polyethylene foam covered with a Spectra® 900 high strength fabric reinforced Seathane® polyurethane skin.

Steel components of these buoys are 304 stainless steel. The radar reflector is aluminum and is embedded internally in the polyethylene foam. These buoys have a fixed padeye at the bottom for shackle attachment.

These buoys utilize the M^cDermott 'TOP HAT' light with a self-contained solar panel, battery and sun switch.

The RMX - L lighted series buoys are not internally ballasted. They depend on the weight of the mooring to maintain a proper attitude. An underwater weight of 22% to 38% of the buoy's net buoyancy should be provided by the mooring.



Model No.	Diameter	Overall Height	Flange & Pipe Size	Weight	Net Buoyancy
RMX-18L	18"	125"	1-1/2"-150#	130 lbs.	875 lbs.
RMX-24L	24"	125"	2"-150#	210 lbs.	1,525 lbs.
RMX-30L	30"	146"	3"-150#	350 lbs.	2,850 lbs.

These buoys are not intended for use in areas where ice may crust in excess of 4".

*Seathane® is a trademark of Urethane Technologies, Inc.
Spectra® is a trademark of Allied-Signal Corp.*